



Behineh Niru

Spadan

POWER PRODUCTS

Portable Single and Three Phase Meter Testers



H M T 1 0 0 0
For testing various types of single and three phase (active or reactive) meters and solid state meters at their installation site



H M T 1 0 0 0
For testing various types of single and three phase (active or reactive) meters at their installation site

Technical Specifications

System: three or one phase.

Nominal Voltage: 3×230/400V

Nominal Frequency: 50Hz

Voltage Measurement Range: 15V to 400V

Current Measurement Range: using 100A clamps with 12mm internal diameter is 300mA to 100A (for residential customers)

Current Measurement Range: using 1000A clamps with 52mm internal diameter is 100mA to 1000A (for demand-charge customers)

Current Measurement Range: using 3600A clamps with 64mm×150mm internal dimension is 1A to 3600A (for special customers)

Measurement Precision Class for active energy: 0.5% in HMT1000 and 1% in HMT100

Measurement Precision Class for reactive energy: 1% in HMT1000 and 2% in HMT100

Adjustable Pulse per kWh: from 1 to 10000

Memory: Flash Memory for storing more than 100 test results

Backup Battery for internal clock: works for 2 years without mains power

Efficient Backup Battery Lifeline: 10 years

Connection to PC: via RS232, and isolated by infrared to read the stored data from memory

Weight of the device: 550 grams without CT

Weight of each 3600A CT: 1.3 kg

Weight of each 1000A CT: 650gr

Weight of each 100A CT: 100gr

Weight of the Suitcase: 3.4kg

Dimension: 16cm×23cm×5cm

Operation Temperature: 0°C to 50°C

Quantities that can be stored during the testing process are listed as

Customer Database (up to 63 characteristics including Serial Number of the meter, Seal Number, Energy Number read by meter, and information acquired from inspecting meter and its cabinet,....)

Percentage of error

Date and Time of the test

Voltages of three phases

Currents of three phases

Active Power of three phases

Reactive Power of three phases

Power Factor of each phase, and Total Power Factor

Harmonic Components of each phase (up to 15th)

THD% for voltages and currents

Power Supply: 80V to 250V, AC and DC

Guarantee Period: one year

Post Sale Services: five years



3600A clamps

BEHINEHNIRU SPADAN ENGINEERING CO.

Central Office: No. 118, Apadana Dovom St., Isfahan, IRAN

Tel: +98(311)6633417-19

Fax: +98(311)6619554

Postal Code: 81667-96344

P.O.Box: 81655-1547

Website: www.behinehniru.com

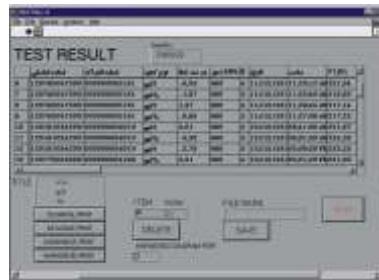
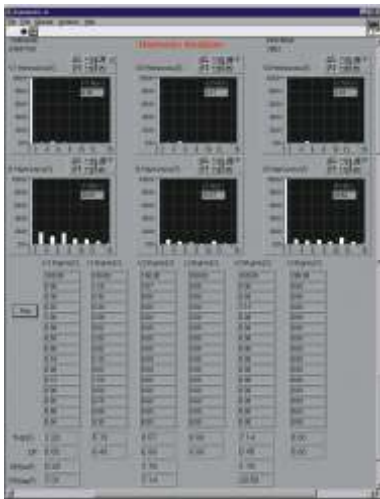
Email: info@behinehniru.com

Applications

- 1 - Testing various types of active or reactive three phase, and also single phase meters (Digital, Electromechanical, Mechanical, ...)
- 2 - Testing CTs (only in HMT1000)
- 3 - Troubleshooting supply circuits of solid state meters (only in HMT1000)
- 4 - Testing meters which are installed in star or triangle configurations
- 5 - Testing meters very fast, in the shortest possible time without interrupting customer's power supply.
- 6 - Testing meters even in the presence of varying load
- 7 - Minimizing operator's error during the testing process
- 8 - Testing Demand Meter (only in HMT1000)
- 9 - Software enables user to print test result tables
- 10 - Removing need of a separate inspection table for meter cabinet
- 11 - Analyzing harmonic components of voltages and currents delivered to the customer

Software capabilities

- Displays all data related to the voltages, currents, power factors, active and reactive power, and percentage of error
- Displays data of harmonics, voltages, and currents graphically or in tables
- Displays THD% for currents and voltages
- Has the ability to send stored data from the device to the software and customer databases (if ordered)
- Prints test results
- Sends data to Customer Test Results Management and Supervision Software (if ordered)



Sample Output of Meter Tester software

ردیف	شماره اشتراک	انرژی مصرف شده	نوع کنتور	درصد خطا(%)	دوربین کWH	تعداد دور	مشخصه ظاهری	تاریخ	ساعت	V1	V2	V3	I1	I2	I3	P1	P2	P3	Q1	Q2	Q3	Pf1	Pf2	Pf3
۱	۰۰۰۶۴۴۱۹	۰۰۰۱۳۱۴۵	اکتیو	-۵/۲۹	۳۷۵	۹	۰۰۰۵۶۷۷۸۵	۱۳۸۰/۱۰/۰۸	۱۰:۰۰:۲۵	۲۲۰/۱	۲۲۱/۴	۲۲۳/۱	۲۰/۱	۲۱/۴	۲۲/۱	۳/۸۹۳	۴/۲۱۵	۴/۶۸۶	۲/۰۷۹	۲/۱۲۱	۲/۸۶۶	-/۸۸	-/۸۹	-/۸۵
۲	۰۰۰۵۹۰۴۴	۰۰۰۱۶۱۷۱	اکتیو	-۱/۷۷	۳۷۵	۹	۰۰۰۳۴۵۶۵۸	۱۳۸۰/۱۰/۰۹	۱۰:۱۵:۳۰	۲۲۱/۳	۲۲۰/۴	۲۲۲/۳	۲۲/۳	۲۰/۴	۲۲/۸	۳/۸۴۹	۳/۲۸۲	۳/۳۰۲	۲/۰۵۹	۲/۰۵۷	۲/۸۶۰	-/۸۸	-/۷۳	-/۶۵
۳	۰۰۰۵۸۲۵۲	۰۰۰۲۷۴۹۹	راکتیو	-۳/۹۳	۳۷۵	۶	۰۰۰۱۲۲۴۵۸	۱۳۸۰/۱۰/۰۹	۱۰:۲۰:۵۸	۲۲۳/۷	۲۲۲/۷	۲۲۳/۹	۲۴/۷	۲۲/۷	۲۲/۹	۳/۶۰۷	۳۵۳۸	۳/۶۳۸	۴/۲۱۸	۳/۵۸۹	۳/۹۰۶	-/۶۵	-/۷۰	-/۶۸
۴	۰۰۰۵۶۷۱۲	۰۰۰۱۰۷۲۳	اکتیو	-۲/۵۹	۳۷۵	۵	۰۰۰۹۸۲۲۵۴	۱۳۸۰/۱۰/۱۰	۱۰:۲۵:۰۲	۲۲۱/۶	.	.	۲۱/۶	.	.	۳/۷۳۳	.	.	۲/۹۶۷	.	.	-/۸۸	۱/۰۰	۱/۰۰